

PROXXON

*Tools
with character!*



*New Products
2026*



PROXXON
MICROMOT
System



Longneck angle grinder LHW/BL



- For precise cutting right into corners with a cutting depth of 14mm.
- Unsurpassed versatility thanks to longneck gear head made of die-cast aluminum.



Longneck angle grinder LHW/BL

BRUSHLESS

Brushless motors and advanced power electronics:
Maximum performance in a compact design!



Speed selection with
memory-function and
LED-display



250 W

Brushless-Motor

Patented angle gear box

LONGNECK



LHW/BL

BRUSHLESS



230V



250 W



16.000



SOLO

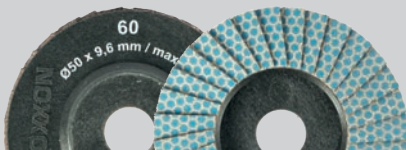
NO 29 202

LONGNECK-SET

BRUSHLESS

LHW/BL + LWB/BL
in L-BOXX 102

NO 29 290



Diamond-coated flap discs

Sanding of cutting edges, breaking of edges and creation of clean chamfers in porcelain stoneware, natural stone (granite, marble), ceramic materials and glass. Optimised tool geometry for perfect corner sanding. Ø 50mm. 2 pieces.

NO 28 166 Grit 60

NO 28 167 Grit 120

NO 28 168 Grit 200



Diamond sanding discs

For sanding and polishing cutting edges and chamfers. Also for breaking edges beforehand and creating clean chamfers. For porcelain stoneware, natural stone (granite, marble), ceramic materials, glass. Self-adhesive. 6 pieces.

NO 28 675 Grit 120

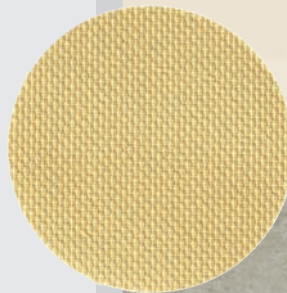
NO 28 676 Grit 200

NO 28 677 Grit 400

Set of diamond sanding discs

One disc each of grit 60 – 120 – 200 – 400 – 800 – 1,500 – 3,000. Including one foam backing pad.

NO 28 679 7 pieces



Diamond-coated cutting disc UNI Cut 50

Fast, thin, clean cuts. All-rounder. For porcelain stoneware, natural stone (granite, marble), ceramic materials, glass. With surface diamond coating (10mm). Thickness 0.9mm.

NO 28 156



Longneck angle milling/drilling unit LWB/BL



EdPLIT

Longneck angle milling/drilling unit LWB/BL

BRUSHLESS

Brushless motors and advanced power electronics:
maximum performance in a compact design!



LWB/BL

BRUSHLESS



230V



250 W



16.000 max



SOLO

NO 29 207

LONGNECK-SET

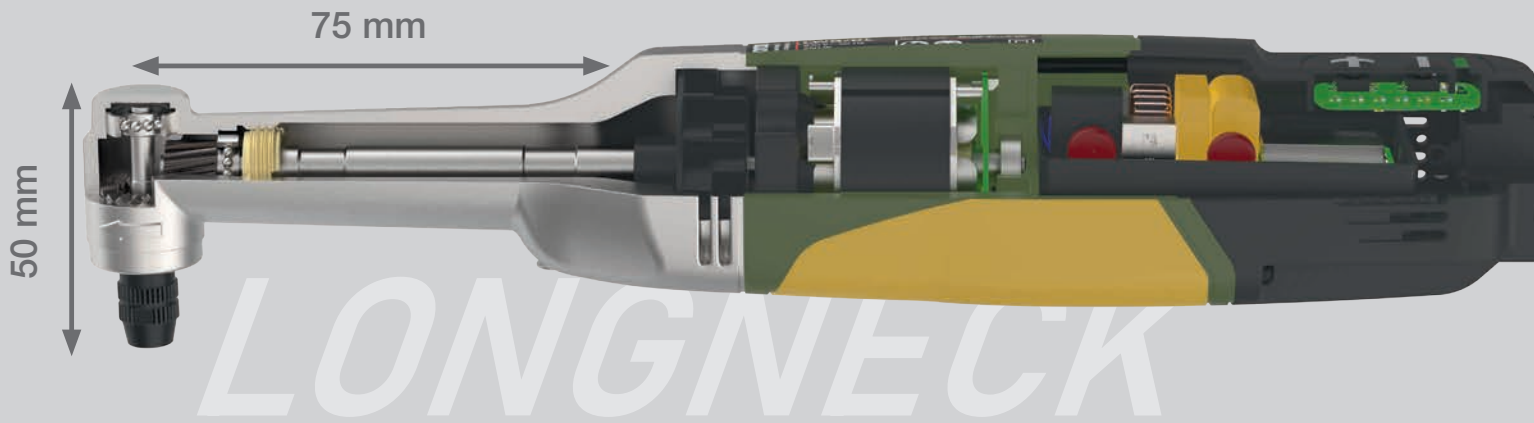
BRUSHLESS

LWB/BL +LHW/BL
in L-BOXX 102

NO 29 290



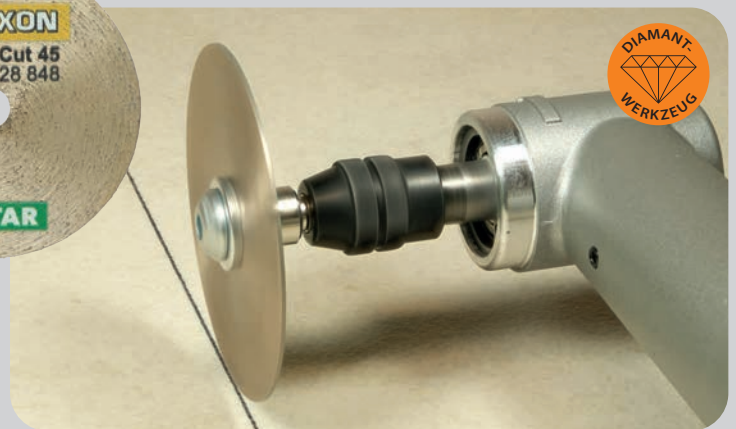
Unsurpassed versatility thanks to longneck gear head made of die-cast aluminum.



Diamond cutting disc SLIM Cut 45

Extremely thin, precise cuts. For sharp edges with almost no chipping. For porcelain stoneware, natural stone (granite, marble), ceramic materials. Thickness 0.6mm. Shaft 3.2mm. Ø 45mm.

NO 28 848



Diamond-coated cutting disc UNI Cut 45

Fast, thin, clean cuts. All-rounder. For porcelain stoneware, natural stone (granite, marble), ceramic materials, glass. With flat diamond coating (10mm). Thickness 0.9mm. Shaft 3.2mm. Ø 45mm.

NO 28 849



Diamond-coated grinding bits

For grinding radii, e.g. in cut-outs. For porcelain stoneware, natural stone (granite, marble), ceramic materials, glass. Ø 5mm. Shaft 3.2mm. 2 pieces.

NO 28 246



Longneck-Set



High-performance duo for tile contractors!

LHW/BL



230V



250 W



16.000 max



50



550



270mm



2.20m



LWB/BL



230V



250 W



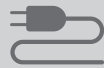
16.000 max



550



270mm



2.20m



LONGNECK

The two longneck models LHW/BL and LWB/BL in proven L-BOXX system. With a high-quality form insert. Plenty of space for accessories.

NO 29 290

With tabless technology for the most demanding applications.



Lithium-ion battery Li/TL3 **TABLESS**

Particularly suitable for energy-intensive tools such as LHW/A. Designed for high charging currents and therefore short charging times. Reaches approximately 95% of its capacity in the SuperCharger SC after around 15 minutes. Increased efficiency thanks to reduced heat loss and delayed safety shutdown in the event of overheating.

Technical Data:

10.8V. 3.0Ah. Length 85mm. Weight 180g.

NO 29 894

Ah
3.0



SuperCharger SC

For lightning-fast charging!



230V



10.8V



8 A

Charges the Tabless Li/TL3 battery from 0 to approximately 95% of its capacity in around 15 minutes. With active cooling and intelligent temperature monitoring. Housing prepared for wall mounting. Not compatible with the Li/A2 battery.

Technical Data:

230V. 50/60Hz. Output 12.6V, 8A. Weight 380g.

NO 29 882



Basic-Set LBX/TL3

Professional starter set with two high-performance batteries Li/TL3 and SuperCharger SC.

In proven L-BOXX-system. With thermoformed insert for two cordless tools. For a customised selection of two cordless tools for applications such as stone and tile treatment, metal construction, for the automotive sector, car body shops, welding, interior work or maintenance. Plenty of space for accessories.

Technical Data:

Charger 230V. 50/60Hz. Output 12.6V, 8A. Weight 380g.

Battery 10.8V. 3.0Ah. Length 85mm. Weight 180g.

NO 29 905



MICROMOT 80 - Series



*The fifth generation of our super-compact rotary tool.
Twice as powerful and just as easy to handle.*

Available as either MM 80/E precision set with high-precision collets or MM 80/EF universal set with flexible drill chuck. Includes starter kit of accessories. Properly stored in the new MICROMOT box. By the way: no further sales packaging! With 230 Volt switching power supply – no separate transformer required!



MM 80/E Precision-Set

NO 28 505



MM 80/EF Universal-Set

NO 28 507

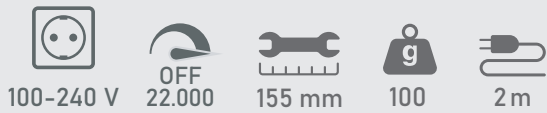


Engraving Set GG 18 & GG/A



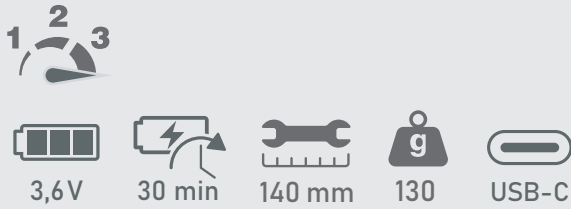
GG 18 Engraving Set

NO 28 636



GG/A Engraving Set

NO 28 640



Super handy – for the finest engravings!

Available as cordless model or corded with a 230 Volt switching power supply – no separate transformer required! Includes initial set of accessories and a 'trial glass'. Properly stored in the new MICROMOT box. With lots of helpful hints and tips to make engraving fun. By the way: no further sales packaging!



Pensander Set PS 18



Excellent for sanding and refining 3D prints.

Super handy. Linear sanding: Ideal for working on surfaces in recesses, slots, cavities and small corners. The device comes with 4 straight and 4 angled sanding inserts with differently shaped surfaces. Includes 230 Volt switching power supply – no separate transformer required!

Pensander Set PS 18

NO 28 638



Flexible sanding pads

Adapts precisely to uneven surfaces due to foam body. Net-structure backing prevents clogging by dust. Excellent for sanding and refining 3D prints.

- NO 28 823** coarse
- NO 28 825** medium
- NO 28 827** fine

Sandpaper

Three sheets with each 20 pads in different shapes. Silicon carbide, self-adhesive.

- NO 28 822** Grit 180
- NO 28 824** Grit 240
- NO 28 826** Grit 400



Precision mechanic pliers



*Five pieces for precision engineering and electronics.
For holding, bending, cutting and much more. In the workshop
and on the go.*



Precisely ground and hardened. Spring-loaded pliers with plastic-coated handles. In a functional zipper case.

NO 28 150



Extraction unit ASA



*Powerful fan for effective air flow.
Also for indoor air purification.*

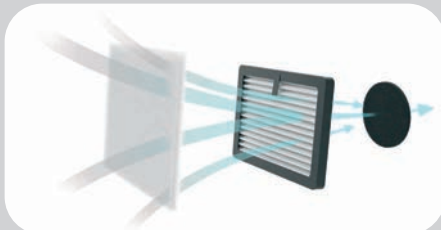
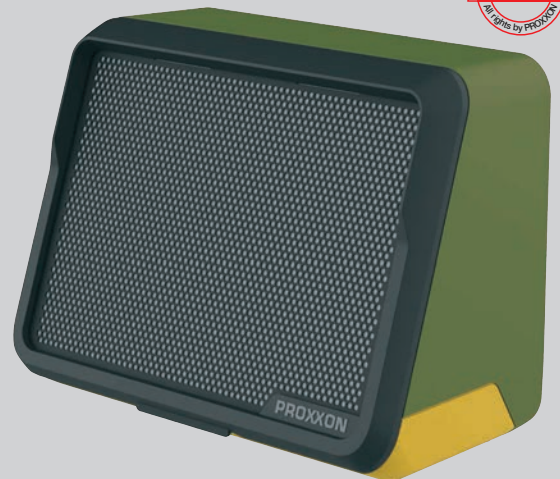


Efficient filtration of dust, chips, vapours and smoke as well as pollen, bacteria, viruses, spores and odours. Three-stage filter system: Pre-filter for separating coarse particles. High-quality main filter according to class HEPA 13 and active carbon filter. Easy filter change. Complete with power supply unit and 2 pre-filters, 2 main filters and 2 activated carbon filters.

Technical Data:

230V. 50/60Hz. 30W. Size 260 x 200 x 150mm.

NO 27 520



Main filter set

Consisting of main filter according to filter class HEPA 13 with filtration efficiency > 99.95 %. Including activated carbon filter. One piece each.

NO 27 522

Pre-filter

For separating coarse particles.

NO 27 524 2 pieces

Automatic workshop vacuum-cleaner WSA

Highly efficient dry vacuum technology: powerful suction, whisper-quiet and energy-saving.

For dust-free working: Switchable automatic mode for direct connection of power tools. With 5-second follow-up time. Large foot switch for convenient operation. With electronic power control. High-quality fleece filter bags according to filter class HEPA 13 with filtration efficiency > 99.95 %. Always tidy: Six slots for accessories and lockable cable hook for mains cable. The appliance lid with motor unit can be removed for easy emptying of the container. Complete with antistatic suction hose, two aluminium suction tubes, floor nozzle, crevice nozzle with brush ring, filter basket, fleece filter bag and suction adapter for PROXXON devices (can also be clamped in a vice).

Technical Data:

230V. 50/60Hz. Maximum pressure difference 210mbar. 700W. For power tools up to 1,800W. Weight 4.3kg. Protective insulation as per class 1. Capacity of the container 11l.

NO 27 500

Fleece filter bags

According to filter class HEPA 13 with filtration efficiency > 99.95 %.

NO 27 502 5 pieces



PROXXON GmbH

Industriepark Region Trier
Dieselstraße 3 - 7
DE-54343 Föhren

Telefon +49 (0) 65 02 - 93 17 - 0
Telefax +49 (0) 65 02 - 93 17 - 200
E-Mail: office@proxxon.com • www.proxxon.com